

# B<sup>DC PUMPS</sup> P 3000 - BP3000 INLINE



## EN. Fuel vane pumps

Powerful, dependable and economical, they are available with 12 and 24-volt direct current motors.

Thanks to their compact sizes, these pumps are as the primary system in earthmoving machinery.

## ES. Bombas de paletas para transferencia.

Potentes, fiables y economicas, estan disponibles can motor 12V y 24V de corriente continua

Por su estructura compacta, estas bombas son usadas como sistema primario and maquinaria de mover tierra.

## PT. Bombas de palhetas transferencia

Potentes, fiaveis e economicas, estao disponiveies com motor de corrente continua 12 e 24 Volts.

Por serem compactos, estas bombas sao usabas como primeiro sistema em maquinas de terraplanagem.

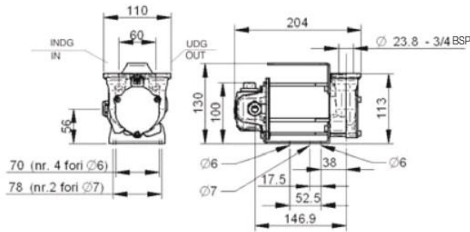
## PERFORMANCE

- Vane pump with rotor.
- By-pass valve incorporated into the pump body.
- Duty cycle 30 min.
- Flow rate up to 50 l/min
- Noise level below 70 dB
- 12-24 V DC operation

- Bomba de paletas can rotor
- Valvula de bypass incorporada
- Ciclo de funcionamiento de 30 minutos
- Caudal de hasta 50 l/min
- Nivel de ruido inferior a 70 dB
- Funcionamiento 12 V - 24 V CC

- Bomba de paletas com rotor
- Valvula de by pass incorporada no corpo da bomba.
- Ciclo de trabalho 30 min.
- Caudal ate 50 l/min.
- Ruido inferior a 70 dB
- Funcionamento 12 - 24 V DC

## DIMENSIONS



## GUARANTEE



**Guaranteed IP55 protection**  
Prevents water and dust entering the motor.



**EMC Test**  
No interference with power circuits.



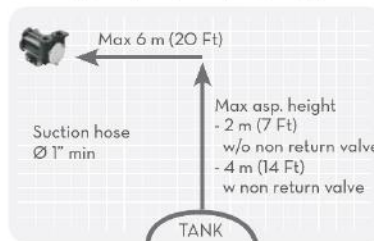
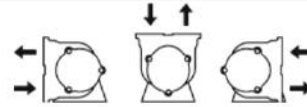
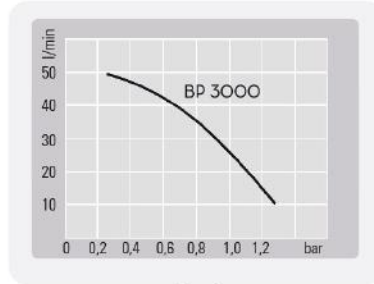
**Vibration Test**  
Able to resist high vibrations.

Model	Weight		Packaging		
	KG	Lbs	mm	inch	pcs/box
F00342000	3.5	7.9	200x120x140	7.9x4.7x5.5	1
F00347000	3.5	7.9	200x120x140	7.9x4.7x5.5	1
F00347500	3.5	7.9	200x120x140	7.9x4.7x5.5	1
F00358500	3.5	7.9	200x120x140	7.9x4.7x5.5	1



**FLOW-RATE**

up to  
**50** l/min  
(up to 13 gpm)



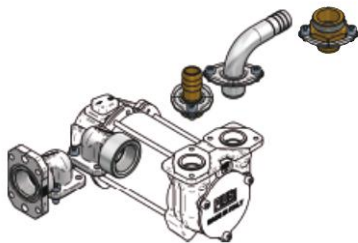
**PERFORMANCE**



- KIT terminal box + 2mt cable + fuse 25A with clamp BP3000 12V  
- Code F1 6293000
- KIT terminal box + 4mt cable + fuse 25A with clamp BP3000 12V  
- Code F1 6295000
- KIT terminal box + 2mt cable + fuse 15A with clamp BP3000 24V



**BP 3000 Vertical Ports Only**



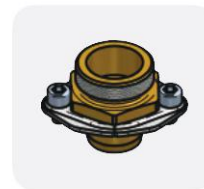
Kit straight hose tail 3/4"  
Code F16172000  
(No.02 pcs)  
1": Code F17124000  
(No.02 pcs)



90° hose tail  
3/4": Code F16173000  
(No.01 pcs)  
1": Code F17262000  
(No.01 pcs)



Flanged elbow  
Code F16178000  
(No.01 pcs)  
Elbow  
Code F16770000  
(No.01 pcs)



Flanged adaptor  
(No.01 pcs)  
1" BSP F: F16799000  
3/4" BSP F: F17314000  
1" BSP M: F17313000

Code	F00342000	F00347000	F00367500	F00358500
Description	BP3000 12V	Bp3000 24V / 12V	BP3000 Inline 12V	BP3000 Inline 24V/12V
Fluids (type)	D	D	D	D
Flow-rate (l/min)	50	50/30	50	50/30
Flow-rate (gpm)	13	13/6	13	13/6
Voltage (DC Volt)	12	24/12	12	24/12
Voltage (Power Walt)	300	310/80	300	310/80
Voltage (Amp max.)	24	13/6.5	24	13/6.5
rpm	2900	2900/1500	2900	2900/1500
Duty Cycle (min)	30	30	30	30
Max working pressure (bar.)	1.5	1.5	1.5	1.5

