

CNQ1700

The Circle Cutting Machine CNQ1700 with a unique design and easy operating system, is ideally for all round shape cutting such as sewer well, street plant spot.

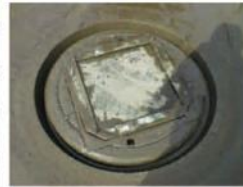
Only take the general cutting blade, it can cut a perfect circle on asphalt or concrete pavement.

- Full Automatic cutting, easy and safe operation
- Remote starting & cutting control
- Two speed transmission
- Using general diamond blade 350-400mm
- With trailer hitch and tire wheel, easy to transport

SEWER WELL CUTTING



1. Cutting



2. After Cutting



3. After Break & Repair



3. Completed

Model	CNQ1700
Weight kg	304
Working Weight kg	402
Dimensions L x W x H mm	110*1020*1700
Minimum Cutting Diameter mm	740
Max Cutting Diameter mm	1500
Max Cutting Depth	160
Blade Diameter mm	350-400
Water Tank L	55
Engine	B & S Vanguard twin-cylinder, air cooled, 4-stroke, gasoline engine
Performance hp/kW	18/13.3
Displacement cc	570
Engine Speed rpm	3600
Starter Mode	Recoil or Electric start
Fuel Capacity	7
Engine Oil Capacity L	1.5

